

BACKSHELLS

Product overview

RELIABLE | LIGHTWEIGHT | SMALL SIZE



Page

Introduction

- 2 • We will meet your demands
- 2 • IS-SOMMER SPACE



Page

Functional Design & Description

- 3 • Functional Design of Backshells - category SUB-D
- 3 • Backshells Description



Page

Backshells - DW 214 Series

- 4 • Standard with round cable entry
- 5 • Standard with cable clamp
- 6 • Rear Wall Mount / round cable entry



Page

Backshells - DW 234 Series

- 7 • Round cable entry, sideways



Page

Backshells - DW 264 Series

- 8 • Short Sleeve, with round cable entry
- 9 • Short Sleeve, with cable clamp



Page

Backshells - DW 300 Series

- 10 • Lightweight, with round cable entry



Page

Backshells - DW 364 Series

- 11 • MDM Backshell



Page

Backshells - SO 214 Series

- 12 • Low Profile, with round cable entry



Page

Backshells - Accessories

- 13 • Cable Entries, „Small“ Standard / Twist-proof
- 14 • Cable Entries, „Tall“ Standard / Twist-proof
- 15 • BSFS, Backshell Fixture Screws



Page

Backshells - Special - Accessories

- 16 • Hexagonal Lock Screws



Page

Backshells - Customized Design

- 17 • Custom-designed backshells in low quantities



Page

Backshells - Reference Projects

- 18 • Successful flown or still flying
- 18 • Approved and shortly before take off
- 18 • Approved and in AIT Stage



Page

Benefit and other Markets

- 19 • Benefit from our knowledge and expertise
- 20 • Overview from other IS-Sommer Markets



Page

Contact Us

- 21 • Sommer GmbH



IS-SOMMER

We will meet your demands

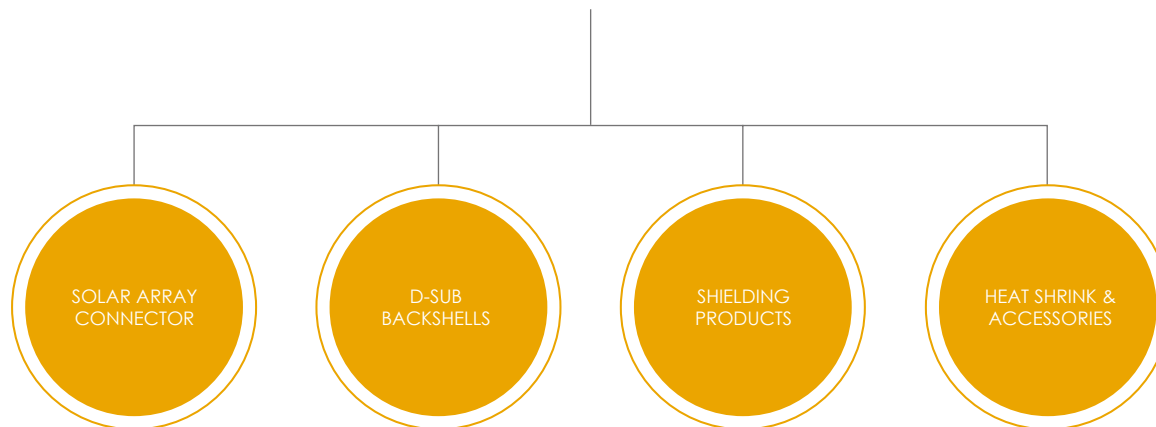
For years we have been proud suppliers to the space industry with specialised harness components. During this time we have developed a deep understanding of the demanding requirements of this industry and have supplied solutions that earned the trust of our customers.

Based on our expertise we can offer various standard solutions made by IS-Sommer or other manufacturers. We have the proven knowledge and capabilities to custom-design products to meet your unique demand.

IS-Sommer is a specialised manufacturer and distributor for well known suppliers from Europe and the USA.

- **Backshells for Circular & Rectangular Connectors - standard & custom solutions**
- **Solar Array Connectors**
- **Wire & Cable**
- **Heat Shrink Sleeving**
- **Shielding Products**
- **Marker Systems**
- **Circular & Rectangular Connectors**
- **Lacing Tape & Spiral Binding**
- **Moulded Parts & Devices**

IS-SOMMER SPACE





Functional Design of Backshells - category SUB-D



Split cable entry

- standard
- twist proof

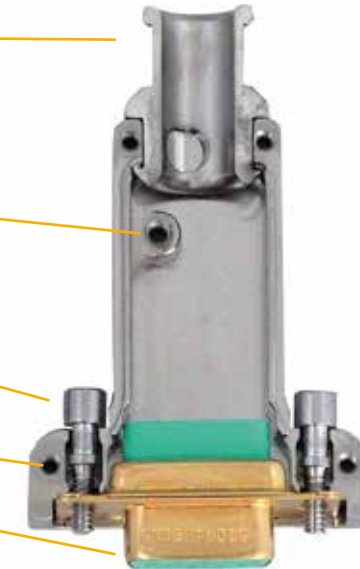
Split backshell

- with ground thread
- w/o ground thread

Backshell fixture screw BSFS

Locking screws

Connector (e.g. 9-pin)



Backshells Description

Backshells are coated aluminum housings that are easy to install.



Benefits:

- split part for easy final inspection without damaging screen
- split part cable entry for cable protection
- excellent EMI performance
- milled parts with excellent fit
- complete connector flange grip
- no loosening of jack screws during installation

base material: Low magnetic Aluminum Alloy

standard surfacetreatment: High phosphorus electroless nickel



Standard with round cable entry

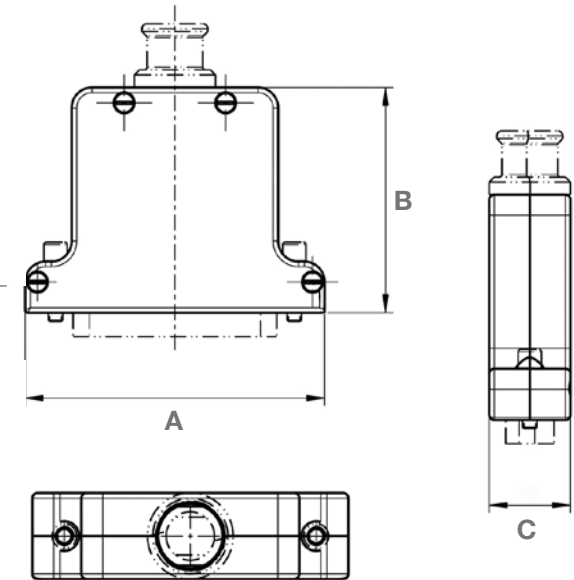
Standard with cable clamp

Rear Wall Mount / round cable entry



Technical Information

Material	Low magnetic Aluminium Alloy
Surface Treatment (other options on request)	High phosphorus electroless nickel
Housing screw	Stainless steel , passivated tightening torque max. 0,35 Nm
Fixture Screw (to be order separately, page 15)	Stainless steel , passivated tightening torque max. 0,32 Nm
Special accessories	Blind thread nuts, special screws, adjustment plates, dummy cable entries



Shell-Size	Part Number	Exit	A	B	C	Nominal Weight	Number of Cable Entries	Cable Entries diameter
1	DW-214-09-1-6-0000	Straight	37,0 mm (1.456 in)	44,0 mm (1.732 in)	16,0 mm (0.630 in)	16,5 g	1	5 to 10 mm (Small, page 13)
2	DW-214-15-2-6-0000	Straight	45,7 mm (1.799 in)	44,0 mm (1.732 in)	16,0 mm (0.630 in)	19,0 g	1	5 to 10 mm (Small, page 13)
3	DW-214-25-3-6-0000	Straight	59,0 mm (2.322 in)	44,0 mm (1.732 in)	16,0 mm (0.630 in)	22,5 g	1	5 to 10 mm (Small, page 13)
4	DW-214-37-4-6-0000	Straight	75,5 mm (2.972 in)	44,0 mm (1.732 in)	27,0 mm (1.063 in)	28,5 g	1	10 to 20 mm (Tall, page 14)
5	DW-214-50-5-6-0000	Straight	73,0 mm (2.874 in)	44,0 mm (1.732 in)	27,0 mm (1.063 in)	30,0 g	1	10 to 20 mm (Tall, page 14)
6	DW-214-104-6-6-0000	Straight	75,5 mm (2.972 in)	44,0 mm (1.732 in)	27,0 mm (1.063 in)	32,0 g	1	10 to 20 mm (Tall, page 14)



Standard with round cable entry

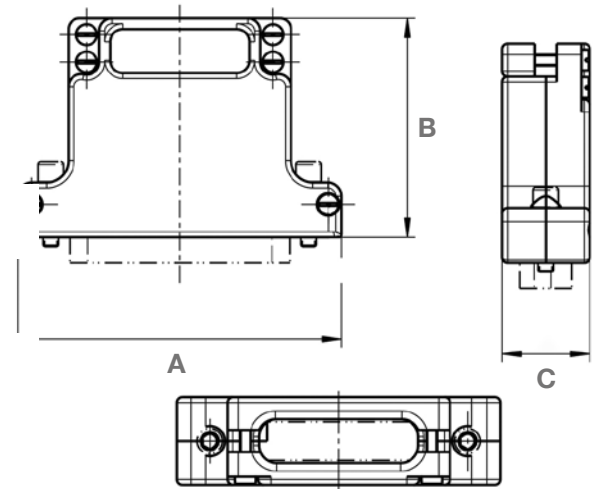
Standard with cable clamp

Rear Wall Mount / round cable entry



Technical Information

Material	Low magnetic Aluminium Alloy
Surface Treatment (other options on request)	High phosphorus electroless nickel
Housing screw	Stainless steel , passivated tightening torque max. 0,32 Nm
Fixture Screw (to be order separately, page 15)	Stainless steel , passivated tightening torque max. 0,32 Nm
Special accessories	Blind thread nuts, special screws, adjustment plates



Shell-Size	Part Number	Exit	A	B	C	Nominal Weight	Number of Cable Entries	Cable Entries diameter
1	DW-214-09-1-6-0011	Straight	37,0 mm (1.456 in)	32,0 mm (1.26 in)	16,0 mm (0.630 in)	15,1 g	1	adjustable
2	DW-214-15-2-6-0012	Straight	45,3 mm (1.784 in)	32,0 mm (1.26 in)	16,0 mm (0.630 in)	16,8 g	1	adjustable
3	DW-214-25-3-6-0013	Straight	59,0 mm (2.322 in)	40,0 mm (1.575 in)	16,0 mm (0.630 in)	23,5 g	1	adjustable
4	DW-214-37-4-6-0014	Straight	75,5 mm (2.972 in)	40,0 mm (1.575 in)	16,0 mm (0.630 in)	27,1 g	1	adjustable
5	DW-214-50-5-6-0015	Straight	73,0 mm (2.874 in)	40,0 mm (1.575 in)	18,0 mm (0.709 in)	30,1 g	1	adjustable
6	DW-214-104-6-6-0016	Straight	75,5 mm (2.972 in)	40,0 mm (1.575 in)	20,0 mm (0.787 in)	32,9 g	1	adjustable



Standard with round cable entry

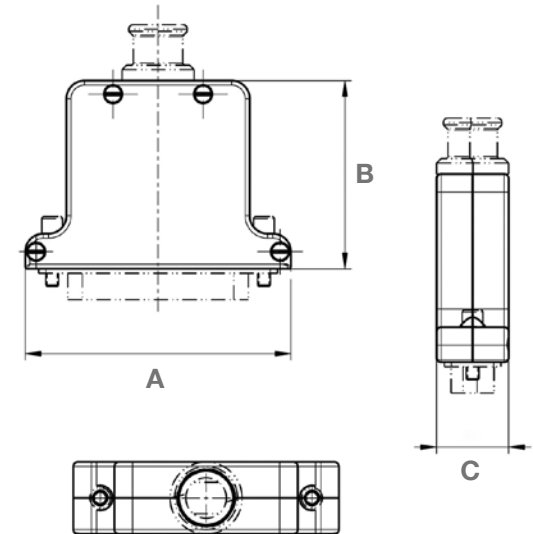
Standard with cable clamp

Rear Wall Mount / round cable entry



Technical Information

Material	Low magnetic Aluminium Alloy
Surface Treatment (other options on request)	High phosphorus electroless nickel
Housing screw	Stainless steel , passivated tightening torque max. 0,35 Nm
Fixture Screw (to be order separately, page 15)	Stainless steel , passivated tightening torque max. 0,32 Nm
Special accessories	Blind thread nuts, special screws, dummy cable entries



Shell-Size	Part Number	Exit	A	B	C	Nominal Weight	Number of Cable Entries	Cable Entries diameter
1	DW-214-09-1-6-9315	Straight	37,0 mm (1.456 in)	41,8 mm (1.647 in)	16,0 mm (0.630 in)	15,5 g	1	5 to 10 mm (Small, page 13)
2	DW-214-15-2-6-9316	Straight	45,7 mm (1.799 in)	41,8 mm (1.647 in)	16,0 mm (0.630 in)	18,1 g	1	5 to 10 mm (Small, page 13)
3	DW-214-25-3-6-9317	Straight	59,0 mm (2.322 in)	41,8 mm (1.647 in)	16,0 mm (0.630 in)	21,4 g	1	5 to 10 mm (Small, page 13)
4	DW-214-37-4-6-9318	Straight	75,5 mm (2.972 in)	41,8 mm (1.647 in)	27,0 mm (1.063 in)	27,2 g	1	10 to 20 mm (Tall, page 14)
5	DW-214-50-5-6-9319	Straight	73,0 mm (2.874 in)	41,8 mm (1.647 in)	27,0 mm (1.063 in)	28,7 g	1	10 to 20 mm (Tall, page 14)

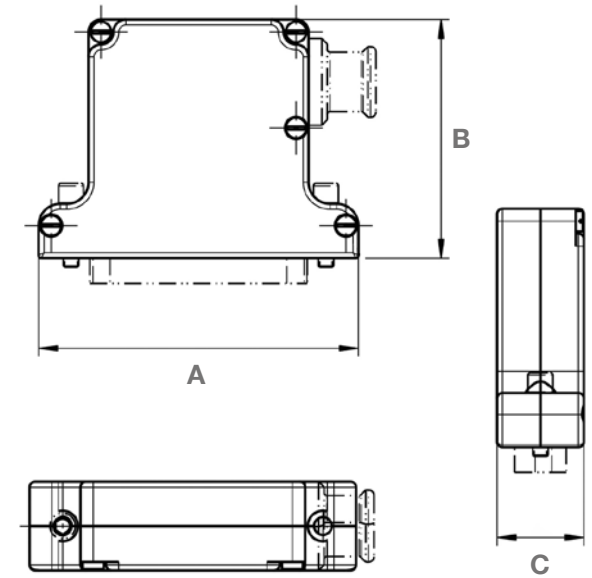


round cabel entry, **sideways**



Technical Information

Material	Low magnetic Aluminium Alloy
Surface Treatment (other options on request)	High phosphorus electroless nickel
Housing screw	Stainless steel , passivated tightening torque max. 0,35 Nm
Fixture Screw (to be order separately, page 15)	Stainless steel , passivated tightening torque max. 0,32 Nm
Special accessories	Blind thread nuts, special screws, adjustment plates, dummy cable entries



Shell-Size	Part Number	Exit	A	B	C	Nominal Weight	Number of Cable Entries	Cable Entries diameter
1	DW-234-09-1-6-0000	sideways	37,0 mm (1.456 in)	44,0 mm (1.732 in)	16,0 mm (0.630 in)	16,5 g	1	5 to 10 mm (Small, page 13)
2	DW-234-15-2-6-0000	sideways	45,3 mm (1.784 in)	44,0 mm (1.732 in)	16,0 mm (0.630 in)	18,3 g	1	5 to 10 mm (Small, page 13)
3	DW-234-25-3-6-0000	sideways	59,0 mm (2.322 in)	44,0 mm (1.732 in)	16,0 mm (0.630 in)	21,9 g	1	5 to 10 mm (Small, page 13)
4	DW-234-37-4-6-0000	sideways	75,5 mm (2.972 in)	44,0 mm (1.732 in)	16,0 mm (0.630 in)	25,8 g	1	5 to 10 mm (Small, page 13)
5	DW-234-50-5-6-0000	sideways & straight	74,0 mm (2.914 in)	44,0 mm (1.732 in)	18,0 mm (0.709 in)	30,0 g	2	5 to 10 mm (Small, page 13)



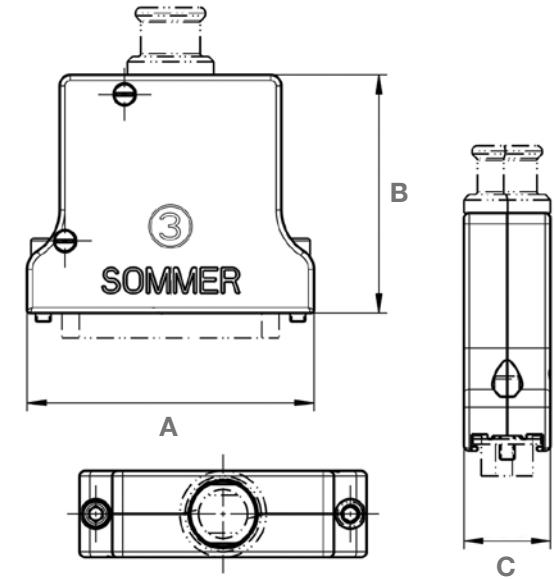
Short Sleeve, with round cabel entry

Short Sleeve, with cable clamp



Technical Information

Material	Low magnetic Aluminium Alloy
Surface Treatment (other options on request)	High phosphorus electroless nickel
Housing screw	Stainless steel , passivated tightening torque max. 0,35 Nm
Fixture Screw (to be order separately, page 15)	Stainless steel , passivated tightening torque max. 0,32 Nm
Special accessories	Blind thread nuts, special screws, dummy cable entries



Shell-Size	Part Number	Exit	A	B	C	Nominal Weight	Number of Cable Entries	Cable Entries diameter
1	DW-264-09-1-6-0214	Straight	30,8 mm (1.213 in)	40,0 mm (1.575 in)	16,0 mm (0.630 in)	14,0 g	1	5 to 10 mm (Small, page 13)
2	DW-264-15-2-6-0215	Straight	39,0 mm (1.536 in)	44,0 mm (1.732 in)	16,0 mm (0.630 in)	17,5 g	1	5 to 10 mm (Small, page 13)
3	DW-264-25-3-6-0216	Straight	53,0 mm (2.087 in)	44,0 mm (1.732 in)	16,0 mm (0.630 in)	21,6 g	1	5 to 10 mm (Small, page 13)
3	DW-264-25-3-6-0257	Straight	53,0 mm (2.087 in)	44,0 mm (1.732 in)	16,0 mm (0.630 in)	21,8 g	2	5 to 10 mm (Small, page 13)
4	DW-264-37-4-6-0217	Straight	69,3 mm (2.729 in)	44,0 mm (1.732 in)	16,0 mm (0.630 in)	25,9 g	3	5 to 10 mm (Small, page 13)
5	DW-264-50-5-6-0218	Straight	67,0 mm (2.638 in)	44,0 mm (1.732 in)	18,0 mm (0.709 in)	29,1 g	3	5 to 10 mm (Small, page 13)
6	DW-264-104-6-6-0219	Straight	69,4 mm (2.733 in)	44,0 mm (1.732 in)	20,0 mm (0.787 in)	34,2 g	3	5 to 10 mm (Small, page 13)



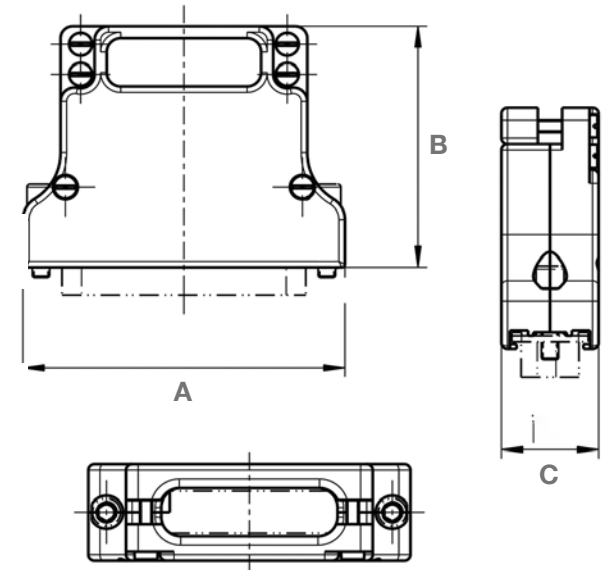
Short Sleeve, with round cable entry

Short Sleeve, with cable clamp



Technical Information

Material	Low magnetic Aluminium Alloy
Surface Treatment (other options on request)	High phosphorus electroless nickel
Housing screw	Stainless steel , passivated tightening torque max. 0,35 Nm
Fixture Screw (to be order separately, page 15)	Stainless steel , passivated tightening torque max. 0,32 Nm
Special accessories	Blind thread nuts, special screws



Shell-Size	Part Number	Exit	A	B	C	Nominal Weight	Number of Cable Entries	Cable Entries diameter
1	DW-264-09-1-6-0021	Straight	30,8 mm (1.213 in)	32,0 mm (1.26 in)	16,0 mm (0.630 in)	13,4 g	1	adjustable
2	DW-264-15-2-6-0022	Straight	39,0 mm (1.536 in)	32,0 mm (1.26 in)	16,0 mm (0.630 in)	14,4 g	1	adjustable
3	DW-264-25-3-6-0023	Straight	53,0 mm (2.087 in)	40,0 mm (1.575 in)	16,0 mm (0.630 in)	21,2 g	1	adjustable
4	DW-264-37-4-6-0024	Straight	69,3 mm (2.729 in)	40,0 mm (1.575 in)	16,0 mm (0.630 in)	25,1 g	1	adjustable
5	DW-264-50-5-6-0025	Straight	67,0 mm (2.638 in)	40,0 mm (1.575 in)	18,0 mm (0.709 in)	29,3 g	1	adjustable
6	DW-264-104-6-6-0026	Straight	69,4 mm (2.733 in)	40,0 mm (1.575 in)	20,0 mm (0.787 in)	31,7 g	1	adjustable

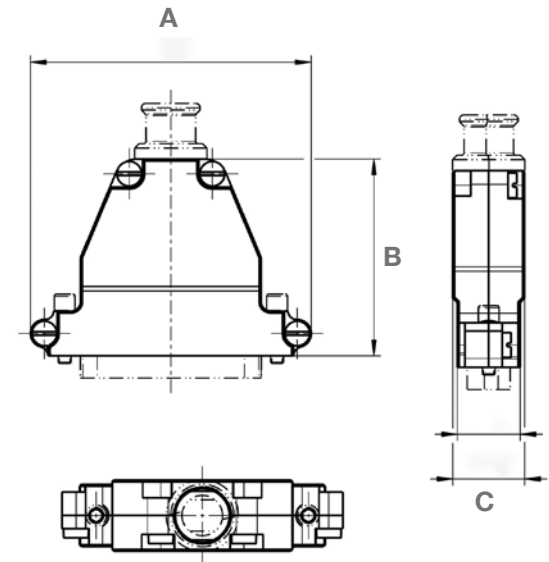


Lightweight, with round cable entry



Technical Information

Material	Low magnetic Aluminium Alloy
Surface Treatment (other options on request)	High phosphorus electroless nickel
Housing screw	Stainless steel , passivated tightening torque max. 0,50 Nm
Fixture Screw (to be order separately, page 15)	Stainless steel , passivated tightening torque max. 0,32 Nm
Special accessories	Blind thread nuts, special screws, dummy cable entries



Shell-Size	Part Number	Exit	A	B	C	Nominal Weight	Number of Cable Entries	Cable Entries diameter
1	DW-300-09-1-6-0000	Straight	40,2 mm (1.583 in)	44,0 mm (1.732 in)	15,9 mm (0.626 in)	11,8 g	1	5 to 10 mm (Small, page 13)
2	DW-300-15-2-6-0000	Straight	48,5 mm (1.910 in)	44,0 mm (1.732 in)	15,9 mm (0.626 in)	12,7 g	1	5 to 10 mm (Small, page 13)
3	DW-300-25-3-6-0000	Straight	62,2 mm (2.449 in)	44,0 mm (1.732 in)	15,9 mm (0.626 in)	14,2 g	1	5 to 10 mm (Small, page 13)
4	DW-300-37-4-6-0000	Straight	78,7 mm (3.099 in)	44,0 mm (1.732 in)	15,9 mm (0.626 in)	17,2 g	2	5 to 10 mm (Small, page 13)
5	DW-300-50-5-6-0000	Straight	76,3 mm (3.004 in)	44,0 mm (1.732 in)	16,7 mm (0.658 in)	19,8 g	3	5 to 10 mm (Small, page 13)

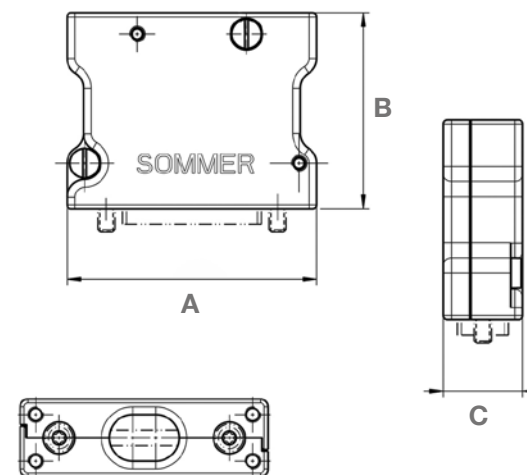


MDM Backshell



Technical Information

Material	Low magnetic Aluminium Alloy
Surface Treatment (other options on request)	High phosphorus electroless nickel
Housing screw	Stainless steel , passivated tightening torque max. 0,35 Nm
Fixture Screw (to be order separately, page 15)	Stainless steel , passivated tightening torque max. 0,26 Nm
Special accessories	Strain relive, covers sheets



Shell-Size	Part Number	Exit	A	B	C	Nominal Weight	Number of Cable Entries	Cable Entries diameter
1	DW-364-09-1-6-0244	Straight	25,2 mm (0.992 in)	25,0 mm (0.984 in)	10,0 mm (0.394 in)	10,1 g	1	round 5 mm
2	DW-364-15-2-6-0246	Straight	29,0 mm (1.142 in)	25,0 mm (0.984 in)	10,0 mm (0.394 in)	11,0 g	1	round 7 mm
3	DW-364-21-3-6-0248	Straight	32,0 mm (1.260 in)	25,0 mm (0.984 in)	10,0 mm (0.394 in)	11,1 g	1	oval 9 x 6 mm
4	DW-364-25-4-6-0250	Straight	35,0 mm (1.378 in)	25,0 mm (0.984 in)	10,0 mm (0.394 in)	11,8 g	1	oval 11 x 6 mm
5	DW-364-31-5-6-0252	Straight	38,0 mm (1.496 in)	25,0 mm (0.984 in)	10,0 mm (0.394 in)	12,2 g	1	oval 11 x 6 mm
6	DW-364-37-6-6-0254	Straight	42,0 mm (1.654 in)	25,0 mm (0.984 in)	10,0 mm (0.394 in)	13,2 g	1	oval 12 x 6 mm
7	DW-364-51-7-6-0256	Straight	40,5 mm (2.595 in)	25,0 mm (0.984 in)	10,0 mm (0.394 in)	12,5 g	1	oval 13 x 6 mm

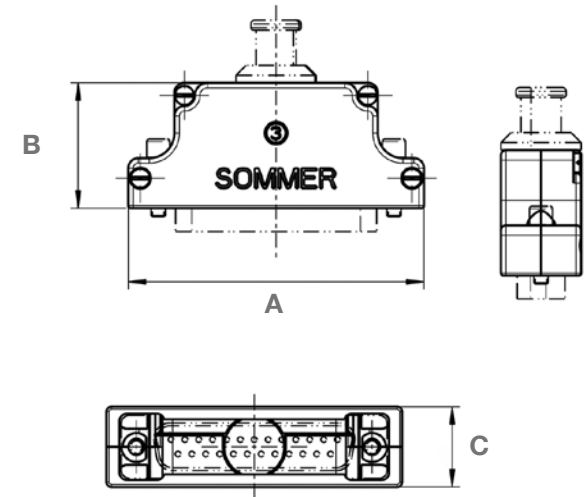


Low Profile, with round cable entry



Technical Information

Material	Low magnetic Aluminium Alloy
Surface Treatment (other options on request)	High phosphorus electroless nickel
Housing screw	Stainless steel , passivated tightening torque max. 0,35 Nm
Fixture Screw (to be order separately, page 15)	Stainless steel , passivated tightening torque max. 0,32 Nm
Special accessories	Blind thread nuts, special screws, adjustment plates, dummy cable entries



Shell-Size	Part Number	Exit	A	B	C	Nominal Weight	Number of Cable Entries	Cable Entries diameter
1	SO-214-09-1-6-E-001	Straight	37,0 mm (1.456 in)	25,0 mm (0.985 in)	16,0 mm (0.630 in)	11,9 g	1	5 to 10 mm (Small, page 13)
2	SO-214-15-2-6-E-001	Straight	45,3 mm (1.784 in)	25,0 mm (0.985 in)	16,0 mm (0.630 in)	14,4 g	1	5 to 10 mm (Small, page 13)
3	SO-214-25-3-6-E-001	Straight	59,0 mm (2.322 in)	25,0 mm (0.985 in)	16,0 mm (0.630 in)	18,4 g	1	5 to 10 mm (Small, page 13)
4	SO-214-37-4-6-E-001	Straight	75,5 mm (2.972 in)	25,0 mm (0.985 in)	16,0 mm (0.630 in)	23,4 g	1	5 to 10 mm (Small, page 13)
5	SO-214-50-5-6-E-001	Straight	73,1 mm (2.878 in)	25,0 mm (0.985 in)	19,25 mm (0.758 in)	25,7 g	1	5 to 10 mm (Small, page 13)

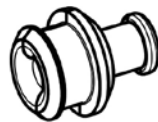
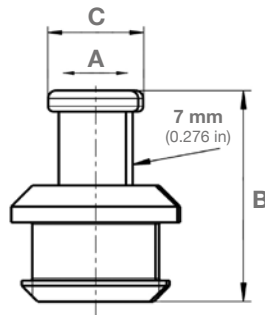


Cable Entries, „Small“ Standard and Twist-proof

Cabel Enteries, „Tall“ Standard and Twist-proof

BSFS, Backshell Fixture Screws

Cable Entries „Small“ - 12 mm fit				
Part Number	A*	B*	C	Weight
Standard				
DW-DCEK-5.0-6-1050	5,0 mm (0.197 in)	20,0 mm (0.788 in)	9,0 mm (0.353 in)	3,94 g
DW-DCEK-6.0-6-1060	6,0 mm (0.236 in)	20,0 mm (0.788 in)	10,0 mm (0.394 in)	3,76 g
DW-DCEK-7.0-6-1070	7,0 mm (0.276 in)	20,0 mm (0.788 in)	11,0 mm (0.433 in)	3,54 g
DW-DCEK-8.0-6-1080	8,0 mm (0.315 in)	20,0 mm (0.788 in)	12,0 mm (0.473 in)	3,28 g
DW-DCEK-9.0-6-1090	9,0 mm (0.353 in)	20,0 mm (0.788 in)	13,0 mm (0.512 in)	3,00 g
DW-DCEK-10.0-6-1100	10,0 mm (0.394 in)	20,0 mm (0.788 in)	14,0 mm (0.551 in)	2,64 g
Twist-proof				
9892-100-00	9,0 mm (0.394 in)	20,0 mm (0.788 in)	13,0 mm (0.512 in)	2,89 g
9892-200-00	7,0 mm (0.276 in)	20,0 mm (0.788 in)	14,0 mm (0.551 in)	3,33 g



Technical Information

Material	Low magnetic Aluminium Alloy
Surface Treatment (other options on request)	High phosphorus electroless nickel
* A	max. cable bundle diameter
* B	Installed cable entry protrudes 12,5 mm (0.492 in) outside the backshell

BACKSHELL



Cable entry

Band-It® clamping zone
for braid shield

Cable Entry Use

For proper EMI/RFI cable shield termination, use a Band-It®-style clamp with the appropriate tool. The clamp may be covered with shrink wrap or tape for added protection.

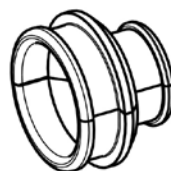
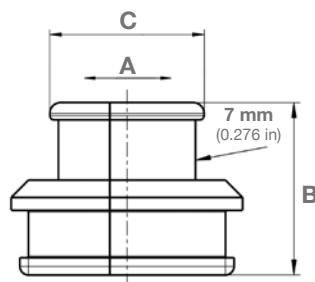


Cable Entries, „Small“ Standard and Twist-proof

Cabel Enteries, „Tall“ Standard and Twist-proof

BSFS, Backshell Fixture Screws

Cable Entries „Tall“ - 23 mm fit				
Part Number	A*	B*	C	Weight
Standard				
DW-DCEK-10.0-6-2100	10,0 mm (0.394 in)	20,0 mm (0.788 in)	15,0 mm (0.591 in)	7,54 g
DW-DCEK-12.0-6-2120	12,0 mm (0.473 in)	20,0 mm (0.788 in)	18,0 mm (0.709 in)	8,34 g
DW-DCEK-14.0-6-2140	14,0 mm (0.551 in)	20,0 mm (0.788 in)	20,0 mm (0.788 in)	8,50 g
DW-DCEK-16.0-6-2160	16,0 mm (0.630 in)	20,0 mm (0.788 in)	22,0 mm (0.866 in)	8,52 g
DW-DCEK-18.0-6-2180	18,0 mm (0.709 in)	20,0 mm (0.788 in)	24,0 mm (0.945 in)	8,34 g
DW-DCEK-20.0-6-2200	20,0 mm (0.788 in)	20,0 mm (0.788 in)	26,0 mm (1.024 in)	8,12 g
Twist-proof				
9892-1200-00	9,0 mm (0.394 in)	20,0 mm (0.788 in)	27,0 mm (1.063 in)	8,28 g



Technical Information

Material	Low magnetic Aluminium Alloy
Surface Treatment (other options on request)	High phosphorus electroless nickel
* A	max. cable bundle diameter
* B	Installed cable entry protrudes 12,5 mm (0.492 in) outside the backshell

BACKSHELL



Cable entry

Band-It® clamping zone
for braid shield

Cable Entry Use

For proper EMI/RFI cable shield termination, use a Band-It®-style clamp with the appropriate tool. The clamp may be covered with shrink wrap or tape for added protection.



Cable Entries, Standard and Twist-proof „Small“

Cabel Enteries, Standard and Twist-proof „Tall“

BSFS, Backshell Fixture Screws

Technical Information

Material Stainless Steel, EN 1.4570
(equal. AISI 303 Cu), passivated

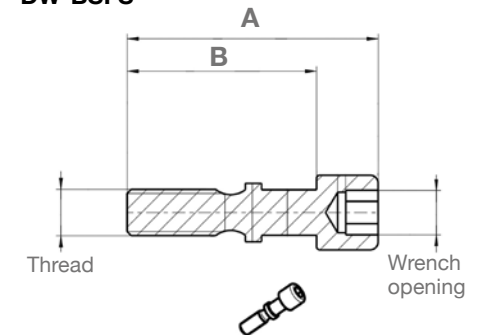
Part Number	A	B	Thread	Wrench opening	Weight	Comments
DW-BSFS-8-0013	15,5 mm (0.61 in)	11,7 mm (0.461 in)	UNC 4-40	2,38 mm (0.094 in)	0,96 g	For all Backshells, exept DW-364-Series
DW-BSFS-8-0014	15,5 mm (0.61 in)	11,7 mm (0.461 in)	UNC 4-40	2,5 mm (0.098 in)	0,96 g	For all Backshells, exept DW-364-Series

Technical Information

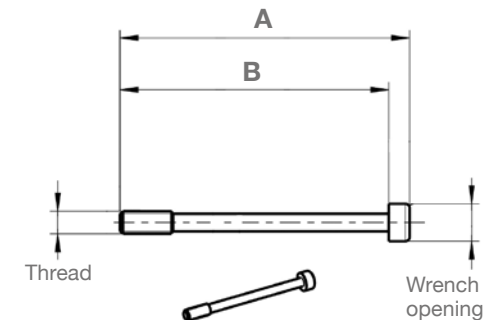
Material Stainless Steel, EN 1.4404
(equal. AISI 316L), passivated

Part Number	A	B	Thread	Wrench opening	Weight	Comments
DW-TSMB-364-6-0062	28,0 mm (1.102 in)	26,0 mm (1.024 in)	UNC 2-56	TROX Nr. 6	0,62 g	only for DW-364-Series
9915-200-01	20,7 mm (0.815 in)	11,7 mm (0.461 in)	UNC 4-40	Slotted head 1,5 mm (0.098 in)	0,56 g	For all Backshells, exept DW-364-Series

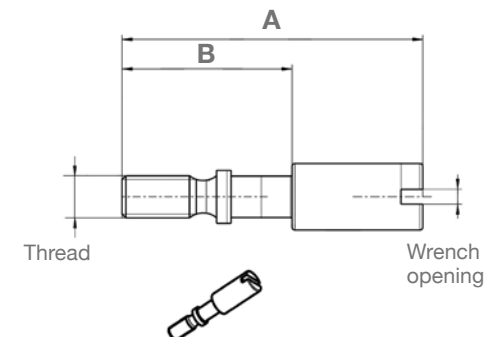
DW-BSFS



DW-TSMB

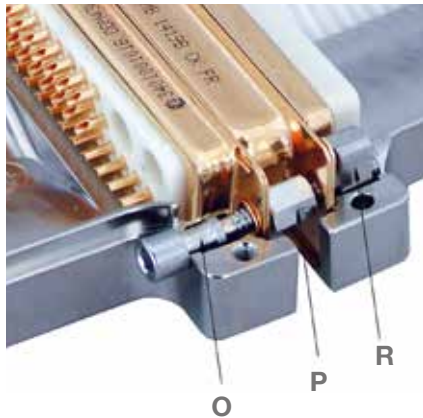


Jack Screw 9915-200-01





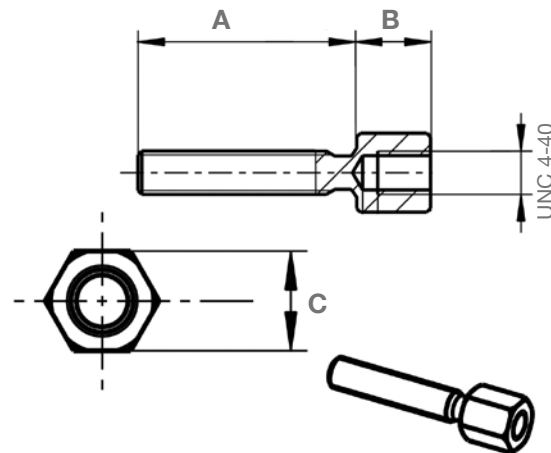
e.g. In-Harness-Installation, Rear Wall Mount, Strain Relieve etc.



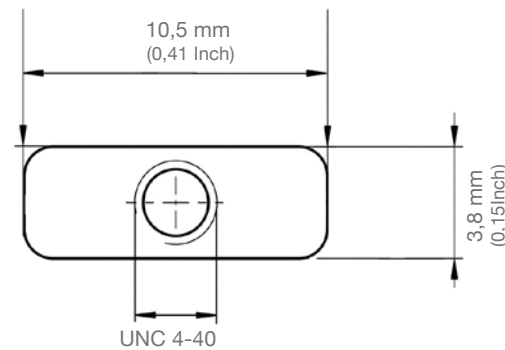
R) blind threaded nut

O) Backshell Fixture Screw
- [see page 15](#)

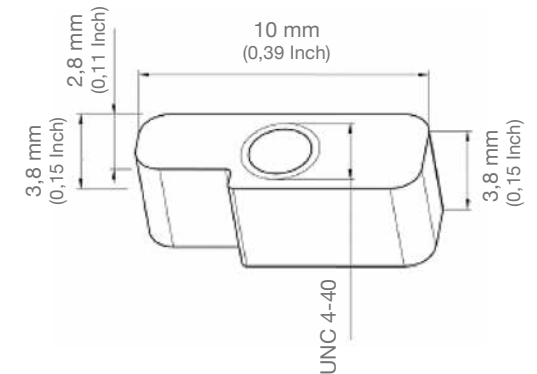
P) Hexagonal Jack Post



DW-BBTN-8-0275



DW-BBTN-8-0275_2
for SO-214-09-1-6-E-001



Hexagonal Jack Post

Part Number	A	B	C	Material
9915-200-02	8,2 mm (0.323 in)	5,0 mm (0.198 in)	4,5 mm (0.177 in)	EN 1.4404 passivated
DW-737-1944	14,5 mm (0.571 in)	4,9 mm (0.193 in)	4,5 mm (0.177 in)	EN 1.4305 gold plated
DW-737-1344	8,6 mm (0.339 in)	4,9 mm (0.193 in)	4,5 mm (0.177 in)	EN 1.4305 gold plated
DW-737-1944-8	14,5 mm (0.571 in)	4,9 mm (0.193 in)	4,5 mm (0.177 in)	EN 1.4404 passivated

More optional components:



Cover Sheet for Cable Entries
of MDM-Backshells



Connector Adjustment Plate



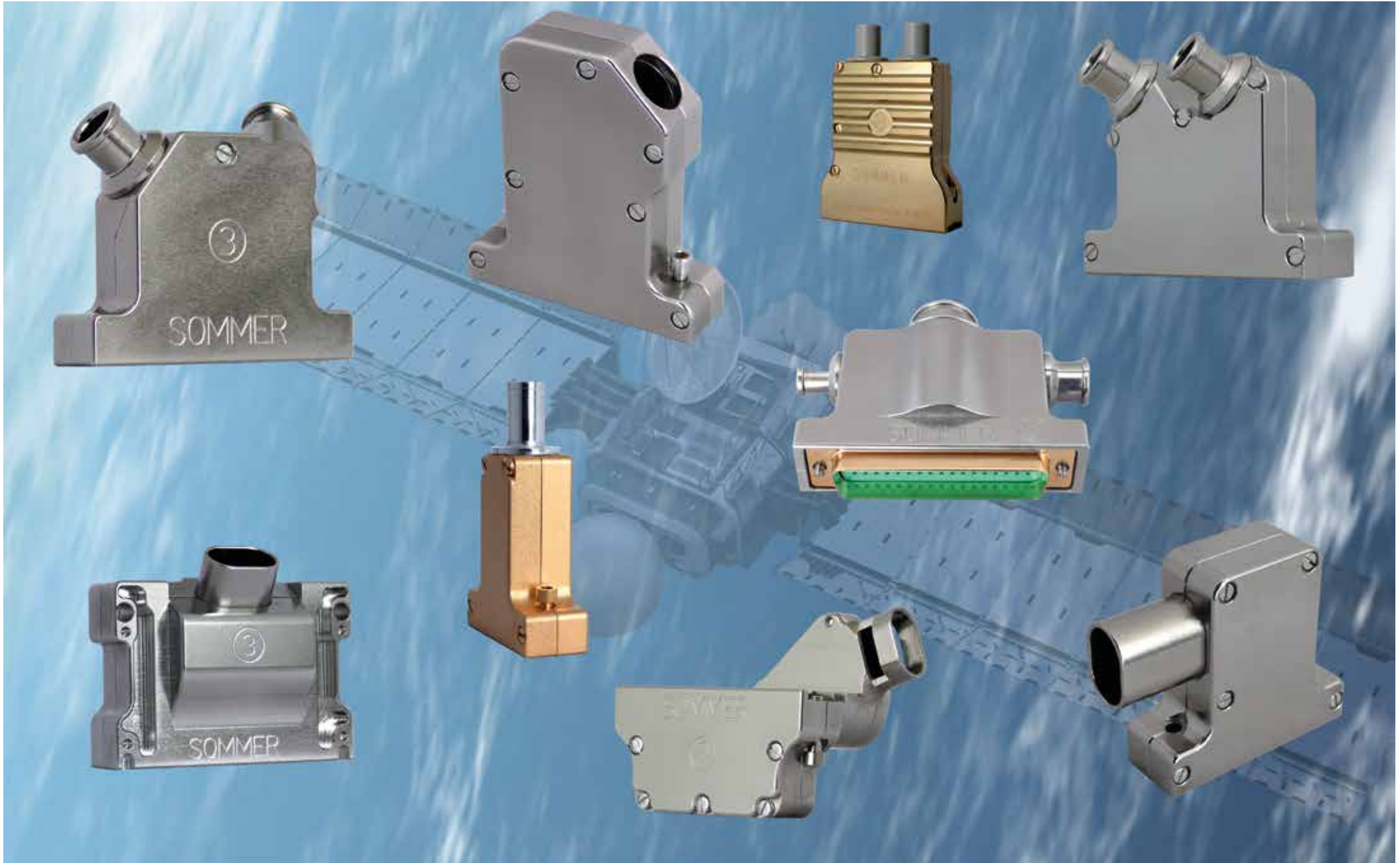
Dummy Cable Entry



Strain Relieve for
MDM-Backshells



Since years we offer custom-designed backshells in low quantities





Our Range of EMI-Backshells took part in numerous space missions, performed by National, European or North American Authorities.

Here a small overview as reference:

Successful flown or still flying

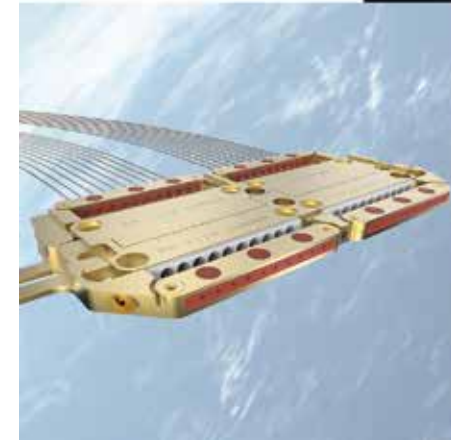
- Champ - DLR / Airbus DS Immenstaad
- Grace - JPL / Airbus DS Immenstaad
- Cryosat - ESA / Airbus DS Immenstaad
- Swarm - ESA / Airbus DS Immenstaad
- TerraSAR - DLR / Airbus DS Immenstaad
- TanDEM - DLR / Airbus DS Immenstaad
- Sentinel-1 A&B - ESA / Airbus DS Immenstaad
- Magnetospheric Multiscale (MMS) Mission - GSFC
- Solar Dynamics Observatory SDO - GSFC
- LRO – GSFC
- Space wheels from Teldix / Rockwell Collins in numerous Missions

Approved and shortly before take off

- Sentinel-5P - ESA / Airbus DS Stevenage UK
- Formosat-5 - Taiwan / SpaceTech Immenstaad
- PAZ - Spain / Astrium Immenstaad

Approved and in AIT Stage

- EnMAP - DLR / OHB-N
- GFO - JPL / Airbus DS Immenstaad
- ICESat2 - GSFC
- James Webb - GSFC

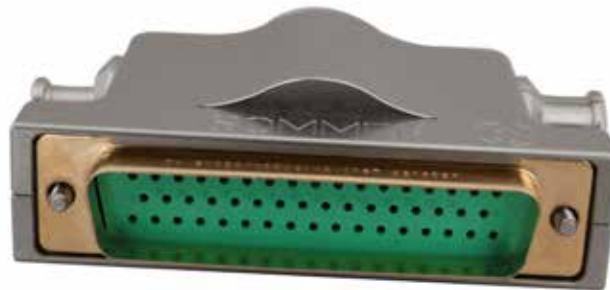


Stand: 08/2017



Benefit from our knowledge and expertise in space related harness products

- Long time expertise about the demanding requirements of the space industry
- Special products with proven heritage
 - standardized and customized options
- Exceptional design capabilities - very small MOQ's
- Professional supply chain and inventory management
- Personal consulting from our sales engineers on site



We are looking forward meeting you in person to talk further about our capabilities. Or to send you more detailed information about our services.

Our headquarter is based in Germany and we have a local presence in UK and USA. From here our sales and design engineers will always respond quickly and professionally to your needs. A phone call or an e-mail is all it takes.

IS-Sommer looks forward to working with you to solve your challenges!



Your challenge is our challenge.

Convince yourself of our innovative products and solutions in the markets:



Industrial

IS-Sommer provides interconnect solutions to the broad industrial market with particular emphasis on the harness requirements of the appliances, automotive, rail mechanical engineering and electric vehicles sectors.



Aerospace, Defence and Marine

IS-Sommer has been servicing the European aerospace, defence and marine markets for more than 20 years. Our products have been designed in numerous programmes like the Eurofighter and the Eurocopter and are supplied to several major Airbus aircrafts.



Motorsport

IS-Sommer has many years of experience in designing components that go into engine controls units, injection and ignition systems, sensors, brake control systems, data logging and steering systems.



Energy

IS-Sommer has probably the largest stock in Germany of MV joints, LV heat-shrinkable products, switchgear connection products, MV terminations and street lighting products. Additionally, we provide cut-to-length energy tubing and kitting services in accordance with customer requirements.



Medical

IS-Sommer provides medical system solutions in heat-shrinkable tubing and cable technologies for endoscopy, catheter production, minimally invasive surgery and HF technology.



Contact Us

IS-Sommer

Website: www.is-sommer.com

Telephone: +49 71 58 98 127-0

Fax: +49 71 58 98 127-98

Email: info@is-sommer.com

LinkedIn: [linkedin.com/company/is-sommer](https://www.linkedin.com/company/is-sommer)

facebook: [facebook.com/IS.Sommer.GmbH](https://www.facebook.com/IS.Sommer.GmbH)

Twitter: twitter.com/SommerGmbH



For U.S. Customers Please contact:

ETSI, LLC

3 Church Circle, STE 120

Annapolis, MD 21401

Phone: 410-294-4198

Fax: 443-782-0264

sales@etsi-llc.com

www.hirelbackshell.com

